

5357 West Taft Road
North Syracuse, NY 13212

Pad Site for Lease or Sale: APPROX. 35,500 SF OF LAND
CALL FOR PRICING INFORMATION – WILL CONSIDER GROUND
LEASE OR SALE



Neighboring Tenants

- ❖ Applebee's
- ❖ Utica Pizza
- ❖ China Wok
- ❖ Family Dollar
- ❖ Comix Zone
- ❖ K9 Wash & Go
- ❖ Planet Fitness
- ❖ Solvay Bank
- ❖ FedEx
- ❖ & More!

Features:

- ❖ Less than a mile off the Taft Road I-81 Exit
- ❖ Ample Parking
- ❖ Located at a High Traffic Volume Intersection
- ❖ Located 2 Miles from Hancock International Airport
- ❖ 5 Minute Drive from Downtown Syracuse & Destiny USA

David C. Muraco
CEO

Empire Management of CNY, Inc.
112 S. Burdick St, Fayetteville, NY 13066

Empire
Mgt. Co.

Office: (315) 445-8990
Cell: (315) 420-0735

Email: dcmuraco@empiremgtco.com
www.empiremgtco.com

5357 West Taft Road
North Syracuse, NY 13212

Pad Site for Lease or Sale: APPROX. 35,500 SF OF LAND
CALL FOR PRICING INFORMATION – WILL CONSIDER GROUND
LEASE OR SALE

PROPOSED RESTAURANT WITH DRIVE-THRU

5357 WEST TAFT ROAD
TAX MAP #007.-01-22.1

VILLAGE OF NORTH SYRACUSE
ONONDAGA COUNTY
NEW YORK



AERIAL MAP
1"=200'



David C. Muraco
CEO
Empire Management of CNY, Inc.
112 S. Burdick St, Fayetteville, NY 13066

Empire
Mgt. Co.

Office: (315) 445-8990
Cell: (315) 420-0735
Email: dcmuraco@empiremgtco.com
www.empiremgtco.com

5357 West Taft Road
North Syracuse, NY 13212

Pad Site for Lease or Sale:

GL: \$150,000/YR OR SALE: \$1,000,000

OVERALL PLAN



David C. Muraco
CEO
Empire Management of CNY, Inc.
112 S. Burdick St, Fayetteville, NY 13066

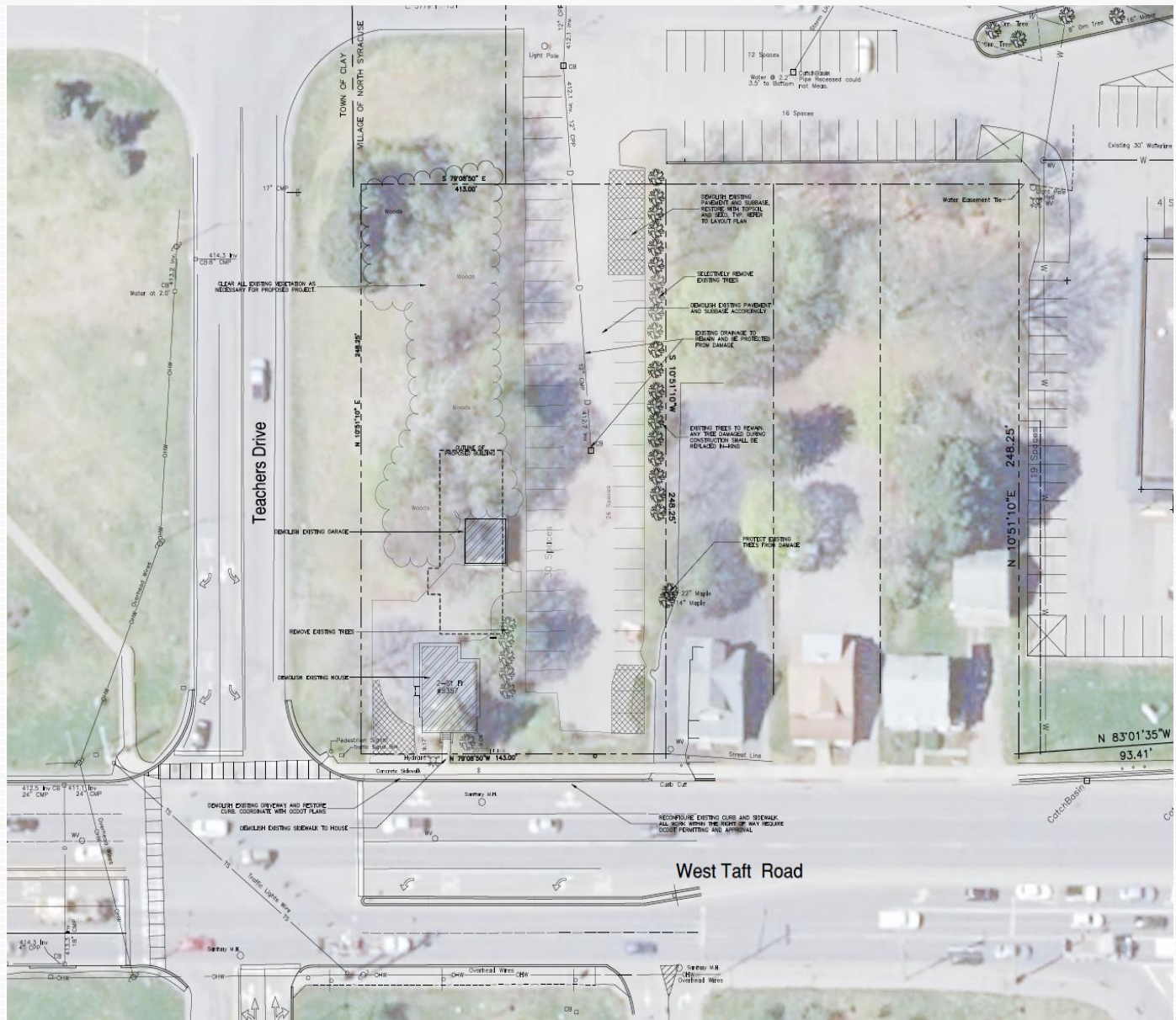
Empire
Mgt. Co.

Office: (315) 445-8990
Cell: (315) 420-0735
Email: dcmuraco@empiremgtco.com
www.empiremgtco.com

5357 West Taft Road
North Syracuse, NY 13212

Pad Site for Lease or Sale: APPROX. 35,500 SF OF LAND
CALL FOR PRICING INFORMATION - WILL CONSIDER GROUND
LEASE OR SALE

DEMOLITION PLAN



David C. Muraco
CEO
Empire Management of CNY, Inc.
112 S. Burdick St, Fayetteville, NY 13066

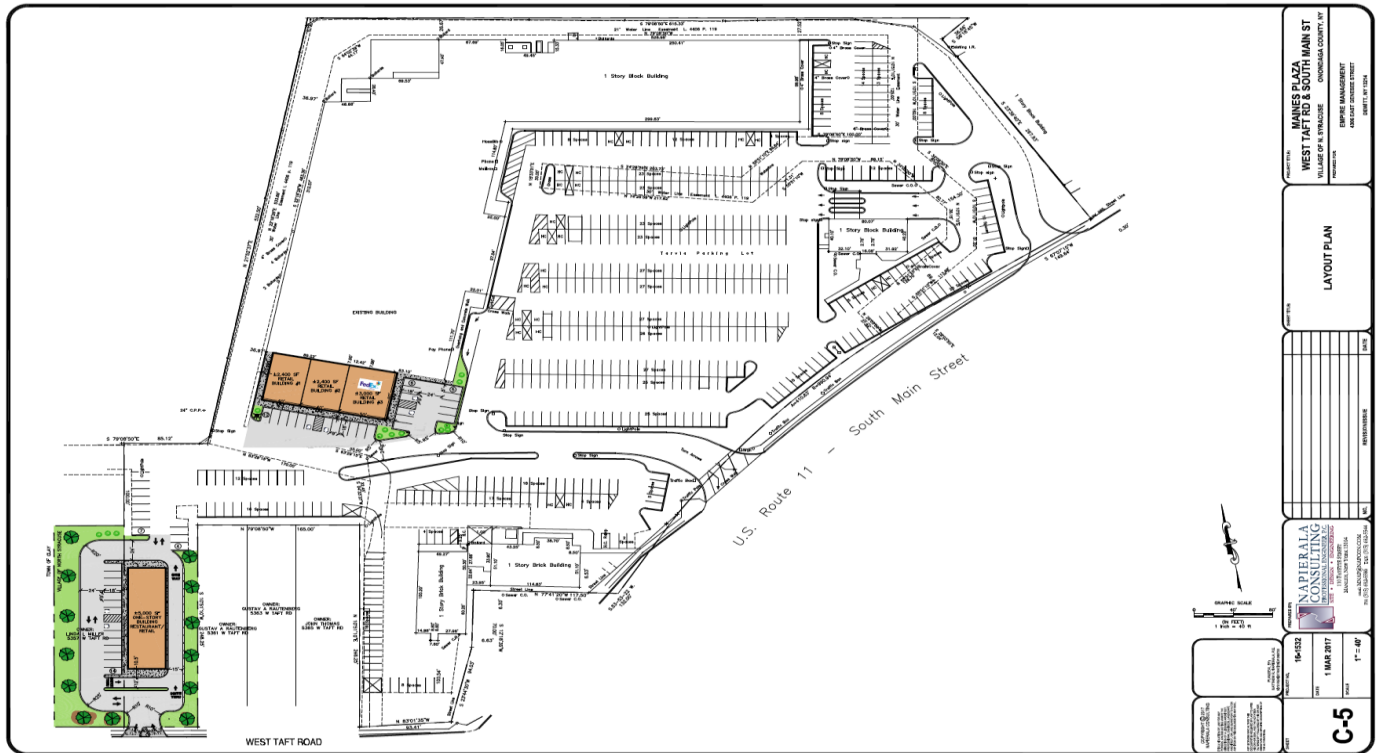
Empire
Mgt. Co.

Office: (315) 445-8990
Cell: (315) 420-0735
Email: dcmuraco@empiremgtco.com
www.empiremgtco.com

5357 West Taft Road North Syracuse, NY 13212

Pad Site for Lease or Sale: APPROX. 35,500 SF OF LAND

CALL FOR PRICING INFORMATION – WILL CONSIDER GROUND LEASE OR SALE



PROJECT: MANES PLAZA
 WEST TAFT RD & SOUTH MAIN ST
 VILLAGE OF NORTH SYRACUSE, CHENANGO COUNTY, NY
 PREPARED BY: EMPIRE MANAGEMENT
 SHEET NUMBER: 001
 DATE: 1 MAR 2017
 SCALE: 1" = 40'
C-5

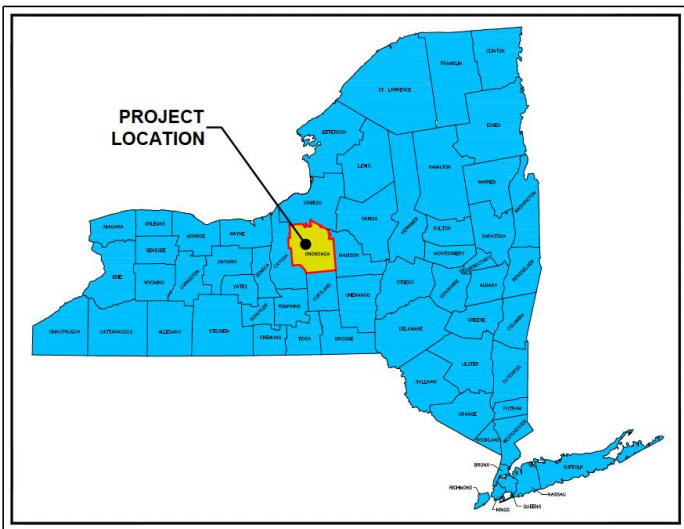
David C. Muraco
 CEO
 Empire Management of CNY, Inc.
 112 S. Burdick St, Fayetteville, NY 13066

Empire
 Mgt. Co.

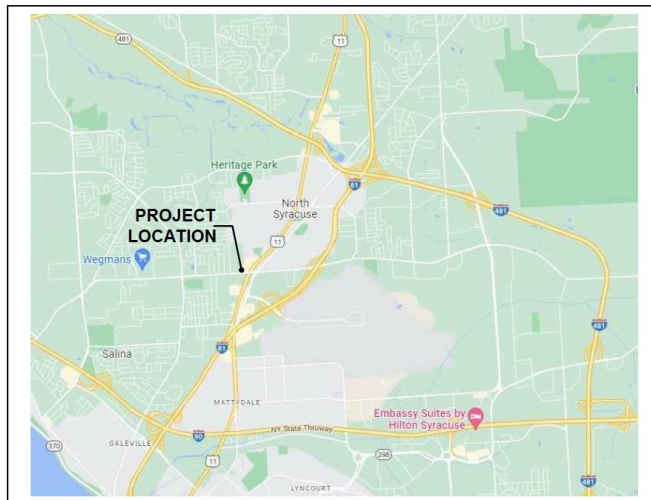
Office: (315) 445-8990
 Cell: (315) 420-0735
 Email: dcmuraco@empiremgtco.com
 www.empiremgtco.com

5357 West Taft Road North Syracuse, NY 13212

Pad Site for Lease or Sale: APPROX. 35,500 SF OF LAND
CALL FOR PRICING INFORMATION - WILL CONSIDER GROUND LEASE OR SALE



SITE LOCATION MAP
NOT TO SCALE



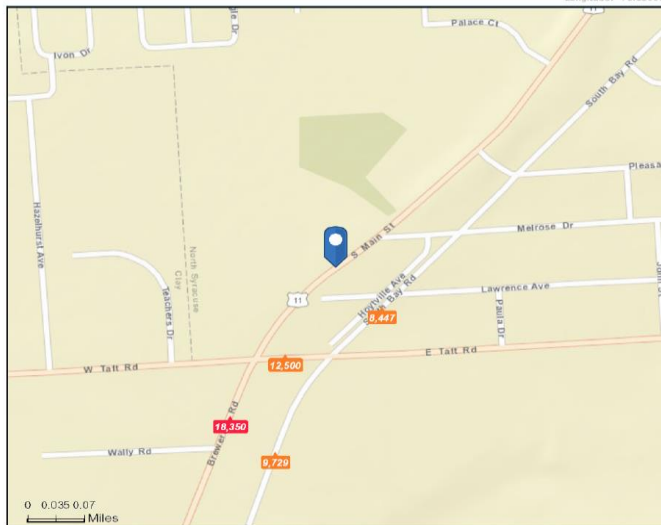
PROJECT LOCATION MAP
NOT TO SCALE



Traffic Count Map - Close Up

628 S Main St, Syracuse, New York, 13212
Rings: 1, 3, 5 mile radii

Prepared by Esri
Latitude: 43.12454
Longitude: -76.13999



Average Daily Traffic Volume
 Up to 6,000 vehicles per day
 6,001 - 15,000
 15,001 - 30,000
 30,001 - 50,000
 50,001 - 100,000
 More than 100,000 per day



Source: ©2017 Kalibrate Technologies

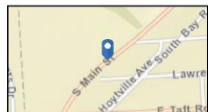
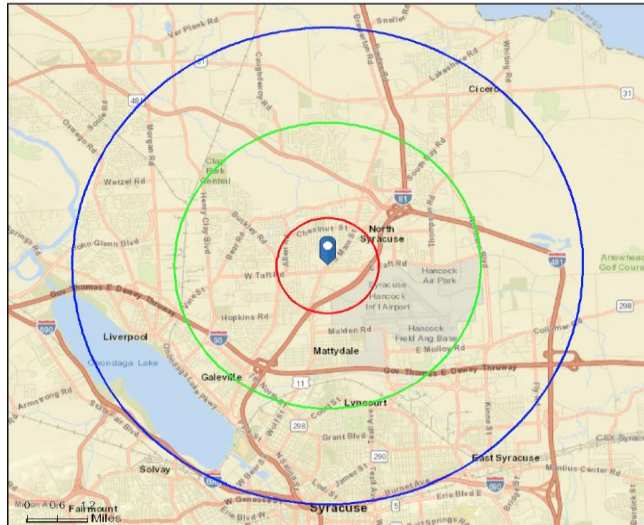
September 08, 2017



Site Map

628 S Main St, Syracuse, New York, 13212
Rings: 1, 3, 5 mile radii

Prepared by Esri
Latitude: 43.12454
Longitude: -76.13999



September 08, 2017

David C. Muraco
CEO
Empire Management of CNY, Inc.
112 S. Burdick St, Fayetteville, NY 13066

**Empire
Mgt. Co.**

Office: (315) 445-8990
Cell: (315) 420-0735
Email: dcmuraco@empiremgtco.com
www.empiremgtco.com